

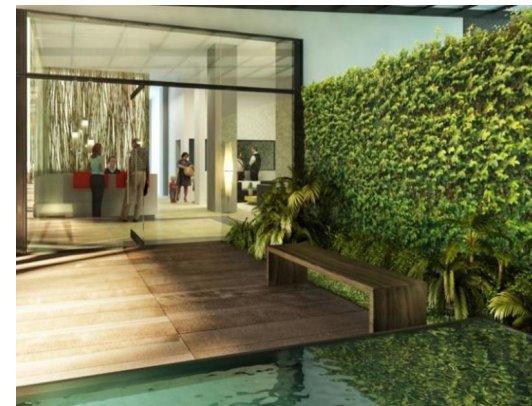
# New Two Bedroom Tower Apartment in Lagunilla de Heredia

# \$126,000

Reference: 12310

📍 Heredia, Heredia

Property Type: Apartment • Bedrooms: 2 • Build Size: 958 sq ft • Year of Construction 2016



- Status: Active/Published
- Close To Schools
- Highway Frontage
- Parking Spaces
- Close To Shops
- Investment Opportunities
- City Properties
- Close To Transport
- Pool

## Property Description

Apartamento Nuevo de Dos Dormitorios en Torre en Lagunilla de Heredia. This Condominium Apartment building is a mixed-use development that is developed in three different areas: commercial, residential and amenities. The building in its residential area has apartments of three types, with a functional and contemporary design mixing materials and spaces in order to generate a feeling of comfort. The commercial area has a development of fifteen stores, harmoniously integrated with ornamental elements; which generates an atmosphere of urban coexistence. 2 Bedroom Apartment (Type A) Located on First Level, Increase by \$ 2,000 per level • Dining room • Kitchen with breakfast area • Balcony • Battery room • 2 bedrooms (main with walking closet) • 2 full bathrooms Includes a parking space and a cellar 2 Bedroom Apartment (Type B) Located on First Level, Increase by \$ 2,000 per level • Dining room • Kitchen with breakfast area • Balcony • Battery room • 2 bedrooms (main with walking closet) • 2 full bathrooms Includes a parking space and a cellar The Apartments Have: Contemporary kitchens and exquisite finishes are the characteristics of each of our apartments.

"Information is deemed to be correct, but not guaranteed"

## Additional Information

- Reference: 12310
- Active/Published
- 2 Bedrooms
- For Sale
- Apartment
- Parking Spaces : 1
- \$126,000
- 2 Bathrooms