

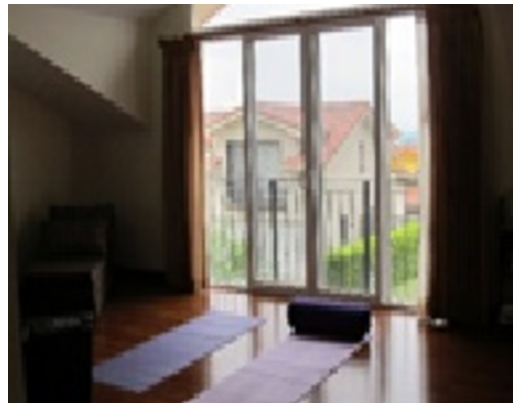
Two-Storey House in Corner Land in Piedades de Santa Ana

\$495,000

Reference: 12336

📍 Santa Ana, San Jose

Property Type: Single Family Homes • Bedrooms: 4 • Lot Size: 464 sq m • Build Size: 3660 sq ft
• Year of Construction 2008



- Status: Active/Published
- Bbq Area
- Close To Transport
- Pool
- Parking Spaces
- City Properties
- Internet
- Association Fee
- Close To Shops
- Pets Allowed

Property Description

Casa de Dos Plantas en Terreno Esquinero en Piedades de Santa Ana. First Floor: nice lobby, large double height ceiling room with fine wood floors, large dining room, spacious kitchen with wooden furniture with island, with granite countertops, TV room with almond wood floor, covered terrace connected to the garden area, guest bathroom. Second Floor: large family room, 4 bedrooms, the main one with a double walk-in closet and full bathroom, guest room with closet with full bathroom, two secondary bedrooms with closet sharing full bathroom. The condominium has a beautiful pool, BBQ area and beautiful green areas. 24/7 security with controlled access, \$ 300 maintenance fee, pets are allowed.

"Information is deemed to be correct, but not guaranteed"

Additional Information

- Reference: 12336
- Active/Published
- 4 Bedrooms
- For Sale
- Single Family Homes
- Parking Spaces : 4
- \$495,000
- 4 Bathrooms